

# BASKETBALL NOTES

Coach Brad Brownell

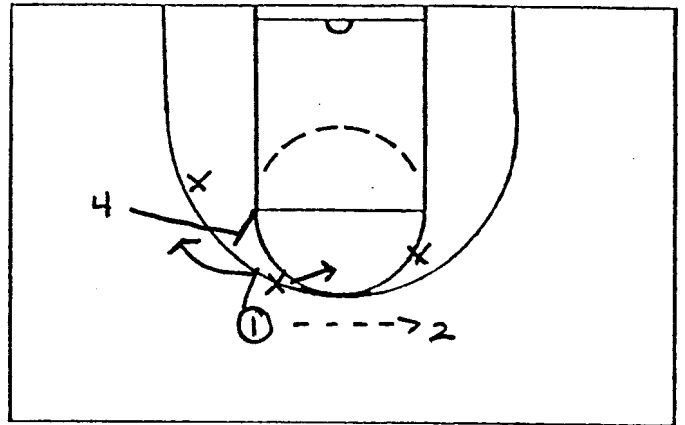
## MOTION IDEAS vs HELPSIDE (SAG) "D"

GENERAL THOUGHTS - MOVE THE DEFENSE

\* BALL REVERSAL

\* PLAYER MOVEMENT

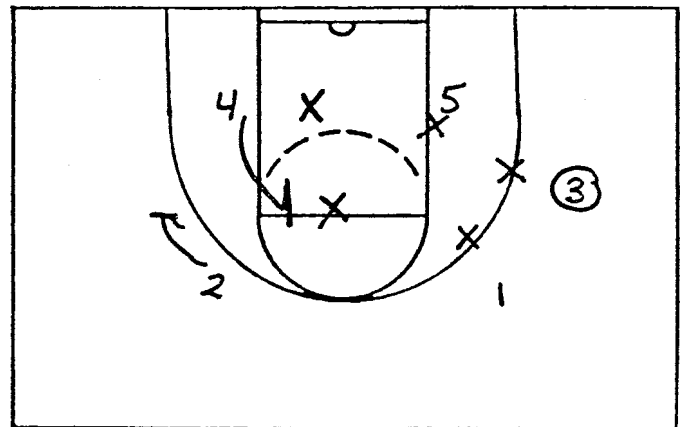
\* EARLY OFFENSE - FLOW INTO MOTION ACTIONS OUT OF TRANSITION



1. FLARE SCREEN

1. Use FLARE SCREENS - DEFENSE USUALLY JUMPS HARD TO BALL

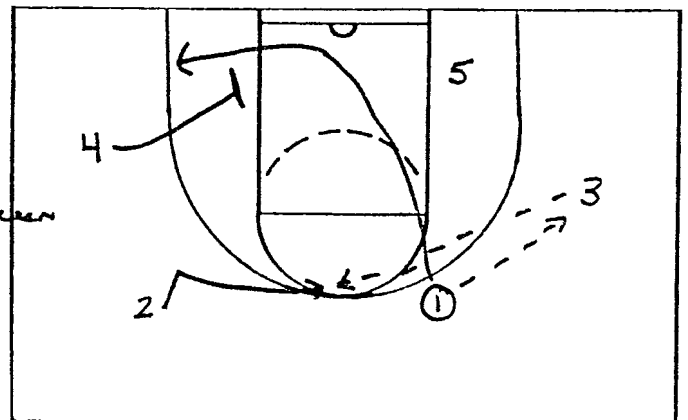
2. SCREEN IN FOR CROSSCOURT PASS  
SAME PRINCIPLE DEFENSE HELPSIDE



2. SCREEN IN - SKIP PASS

3. DOWNSCREEN (SCREEN IN) CUTTERS  
COMING THROUGH TO HELPSIDE

\* Could also use misdirection here and start towards the 1-4 Downscreen but have 2 bring BALL BACK TO 3 OFF 5 MAN'S FLARE SCREEN



3. DOWNSCREEN CUTTERS COMING THROUGH TO HELPSIDE